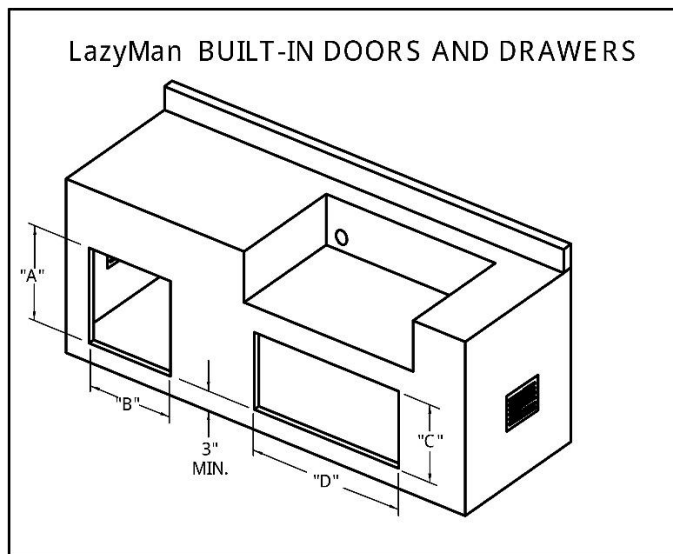




INSTALLATION GUIDELINES- LazyMan BUILT-IN DOORS/ DRAWERS

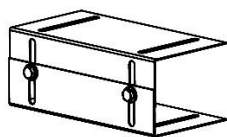
DRAWER MODELS: BI-DRW-3, BI-DRW-2, BI-DRW-1

Use the following cutout chart and table below for planning your island installation and to determine the proper cut-out size for BOTH your LazyMan Built-in Doors AND Built-In Drawers.

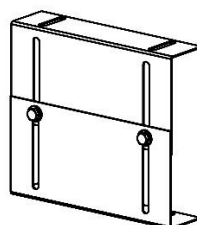


MODEL	DESCRIPTION	"A"	"B"	"C"	"D"
BI-DWR-1	BUILT-IN DRAWERS- TRASH BIN	15 3/4"	12 3/4"		
BI-DWR-2	BUILT-IN DRAWERS- DOUBLE	15 3/4"	12 3/4"		
BI-DWR-3	BUILT-IN DRAWERS- TRIPLE	15 3/4"	12 3/4"		
AC-BIDI	BUILT-IN DOUBLE DOORS-28"			16"	24 1/4"
AC-BIDI-40	BUILT-IN DOUBLE DOORS-40"			16"	36 1/4"
BI-1X-DI (R)	BUILT-IN SINGLE DOOR-RIGHT			16"	12 1/8"
BI-1X-DI (L)	BUILT-IN SINGLE DOOR- LEFT			16"	12 1/8"

It is highly recommended that you use the **REAR SUPPORT BRACKETS** that are provided with your LazyMan Built-In Drawers. These brackets provide maximum support for your drawers at the rear and permanently protect your installation.



SUPPORT BRACKET ASSEMBLED IN LOW POSITION. ADJUSTS FROM 2" TO 3- 3/16"



SUPPORT BRACKET ASSEMBLED IN HIGH POSITION. ADJUSTS FROM 4" TO 7"

COMBINE HIGH AND LOW POSITIONS FOR RANGES IN BETWEEN

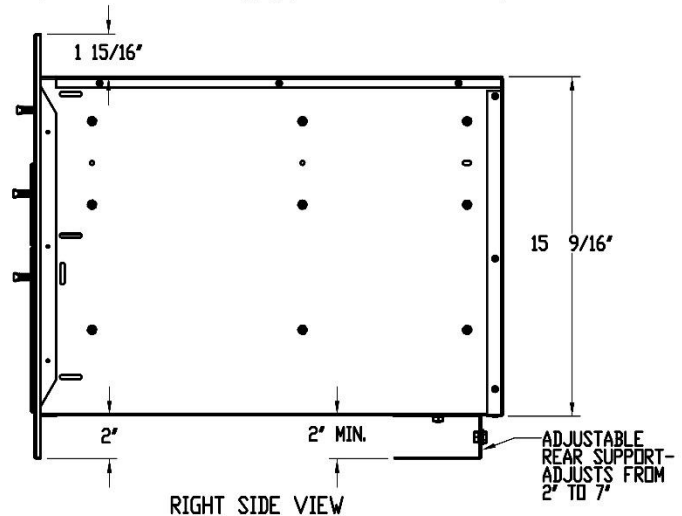
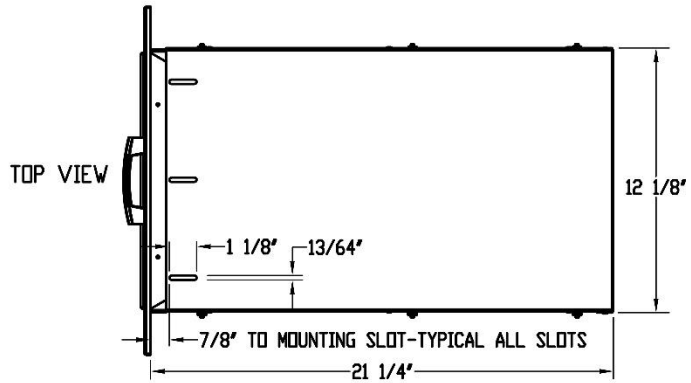
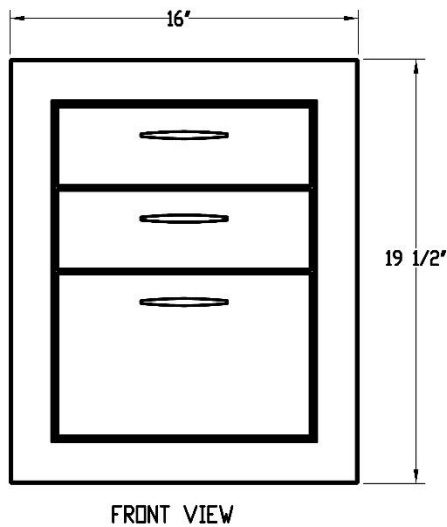
INSTALLATION GUIDELINES- LazyMan BUILT-IN DOORS/DRAWERS

DRAWER MODELS: BI-DRW-3, BI-DRW-2, BI-DRW-1

OVERALL PRODUCT DIMENSIONS

NOTE: 3-DRAWER MODEL SHOWN (BI-DRW-3)
OUTSIDE DIMENSIONS ARE THE SAME FOR
2-DRAWER MODEL (BI-DRW-2) AND SINGLE
DRAWER/TRASH RECEPTACLE (BI-DRW-1)

RECOMMENDED ISLAND CUTOUT SIZE:
12 3/4" WIDE X 15 3/4" MIN. HIGH. MAINTAIN
3" CLEARANCE AT BOTTOM.



Measure the distance from the bottom of the island cutout to the floor inside the island. If the island is being built without a floor, measure to the ground. Assemble the two rear support brackets to match this distance. Attach the rear support brackets to the bottom (at the rear) of the drawer cabinet. Use the screws and nuts provided. NOTE: if there is a cutout opening next to the opening for the drawers, then the rear support brackets may be installed to the cabinet (through the adjacent opening) after the cabinet is partially slid into place.

Remove each drawer by sliding it out and then depressing the lock levers on each drawer slide. The levers will detach when depressed in opposite directions. Carefully slide the drawer out being careful not to bend or damage the drawer slides. **IMPORTANT: Fully slide each drawer slide back into the closed position.**

Carefully tilt the drawer cabinet so that the support bracket clears the bottom of the cutout. Bring the cabinet back to level and slide it fully into position so the flanges touch the front of the island.

For wood or metal island construction, secure the front of the cabinet to the inside of the island drawer frame using #10 x 1 1/2" Sheet Metal Screws. Pre-drill all holes. Install at least two screws through each of the four walls of the cabinet. NOTE: if you are installing into masonry construction, then #10 screws with anchors will need to be acquired and used.

Carefully reinstall each drawer by making sure that the drawer slides are fully closed before insertion.

INSTALLATION GUIDELINES- LazyMan BUILT-IN DOORS/DRAWERS

DOOR MODELS: AC-BIDI-40, AC-BIDI, BI-1X-DI (R), BI-1X-DI (L)

Follow the cutout guidelines using the cutout chart and table found on the first page of this instruction sheet. Make sure you match your model number to correct door size found on the chart. Unpack your door(s) and slide the inside frame of the door(s) into the island cutout. Check for correct fit before securing. If you are securing into a wood frame or a metal frame, then use sheet metal screws for attachment. A #10 x 1-1/2" sheet metal screw is recommended. If you are installing into masonry construction, then it is recommended that #10 screws and anchors be used. Attach at least TWO screws to each side of the door frame for proper attachment. After installation, open each door to make sure that door alignment has been maintained.

